

Hogpen Hill Farms Sculpture Park

5 Reviews

#4 of 13 things to do in Woodbury

Nature & Parks, Museums, Shopping, More

100 Weekeepemee Rd, Woodbury, CT 06798-2032

Open today: Closed

 **Leem921**
North River, NY • 41 contributions

0

Absolutely the best thing in Connecticut

Oct 2022 • Family

You know, we went to Storm King last Sunday. And, as awesome as that was, we liked Hogpen better. Of course, that's like picking a favorite child. Hogpen was manageable without a bike. The art was amazing. Even the drive in was whimsical. On the ride up, our 9 year old wanted to start a “no more sculpture garden club”. At Hogpen: he was leading us around. I can’t believe one artist produced such a broad range of works. Amazing. This is a must see. Don’t miss the bamboo maze.



Written 16 October 2022

This review is the subjective opinion of a Tripadvisor member and not of Tripadvisor LLC. Tripadvisor performs checks on reviews as part of our industry-leading trust & safety standards. Read our [transparency report](#) to learn more.

 **Marty_CT**
Norwalk, CT • 52 contributions

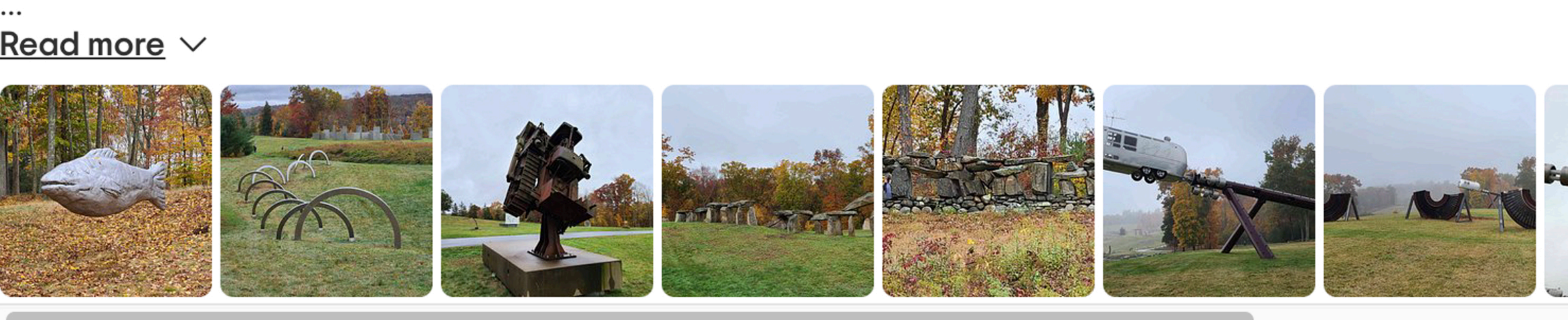
0

Whimsical sculpure park in northwest CT

Oct 2020

Hogpen Hill Farms is a 234 acre tree farm and landscape sculpture park with 100 "ET" art works entirely fashioned by Edward Tufte. Most of the sculptures are huge, quirky transformations of industrial objects, stone boulders and outdoor art, with five miles of walking trails.

My favorite sculpture was a working Airstream trailer on a launching beam and named Rocket Science 3. The sculptor obviously has a sense of humor and wants you to see things with fresh eyes.



Written 25 October 2020

This review is the subjective opinion of a Tripadvisor member and not of Tripadvisor LLC. Tripadvisor performs checks on reviews as part of our industry-leading trust & safety standards. Read our [transparency report](#) to learn more.

 **Peter33851**
New Haven, CT • 53 contributions

0

Large, whimsical sculptures set in pastureland.

Jul 2023 • Couples

My wife and I live about an hour away. This was a destination day trip, something we had thought of earlier but opening times are extremely limited. The weather was good: sunny and warm. The walking easy, and note that one does have to walk to see most of the sculptures, only a few are visible from the road. The trails are wide, roughly mowed hay, and signage is limited, so one wanders about a fare degree, making serendipitous cultural discoveries. One never knows what is over the next hill, in part because, in addition to limited signage, there is no map. Sometimes, the sculpture says something, even if it's just "JOY", sometimes it is just a rock. Go with the flow. I expect that the price deters many, s...
[Read more](#)

Written 23 July 2023

This review is the subjective opinion of a Tripadvisor member and not of Tripadvisor LLC. Tripadvisor performs checks on reviews as part of our industry-leading trust & safety standards. Read our [transparency report](#) to learn more.

 **dustythoughts**
Manchester, CT • 2,085 contributions

0

Fantastical and whimsical

Mar 2021

This whimsical sculpture garden is full of fantastical shapes and statues on a 234-acre farm. It's a showcase for Edward Tufte's work, and everything is so fascinating that it takes a couple of hours just to get to everything. This place is one of the surprising hidden gems of Connecticut, where if you deviate from the main road, you find interesting, offbeat activities. The sculptures are set in a beautiful, bucolic, rural area, so the landscape is definitely part of the appeal of visiting this place.

Written 27 March 2021

This review is the subjective opinion of a Tripadvisor member and not of Tripadvisor LLC. Tripadvisor performs checks on reviews as part of our industry-leading trust & safety standards. Read our [transparency report](#) to learn more.

Written 16 October 2022

This review is the subjective opinion of a Tripadvisor member and not of Tripadvisor LLC. Tripadvisor performs checks on reviews as part of our industry-leading trust & safety standards. Read our [transparency report](#) to learn more.

 **KDAA**
East Hartford, CT • 805 contributions

1

Extensive and unique sculpture park

Jun 2021

This is a very large (200+) acre sculpture park with around 100 works on it. The sculptures are unique and generally quite large. While I'm not always a fan of the artistic aspects of sculptures, I was impressed by the technical and engineering skill required for some of these. It is also in a lovely location in the Litchfield Hills, so it is an enjoyable walk.

Be prepared to walk - if you want to see everything, it is quite a bit of walking and it across hilly terrain. There are no defined pathways....
[Read more](#)



Written 22 July 2021

This review is the subjective opinion of a Tripadvisor member and not of Tripadvisor LLC. Tripadvisor performs checks on reviews as part of our industry-leading trust & safety standards. Read our [transparency report](#) to learn more.

 **dustythoughts**
Manchester, CT • 2,085 contributions

0

Fantastical and whimsical

Mar 2021

This whimsical sculpture garden is full of fantastical shapes and statues on a 234-acre farm. It's a showcase for Edward Tufte's work, and everything is so fascinating that it takes a couple of hours just to get to everything. This place is one of the surprising hidden gems of Connecticut, where if you deviate from the main road, you find interesting, offbeat activities. The sculptures are set in a beautiful, bucolic, rural area, so the landscape is definitely part of the appeal of visiting this place.

Written 27 March 2021

This review is the subjective opinion of a Tripadvisor member and not of Tripadvisor LLC. Tripadvisor performs checks on reviews as part